



GP Registrar Information Management & Education

Gippsland Education & Training for General Practice

GPRime User Guide

Threaded Message Board Supplement



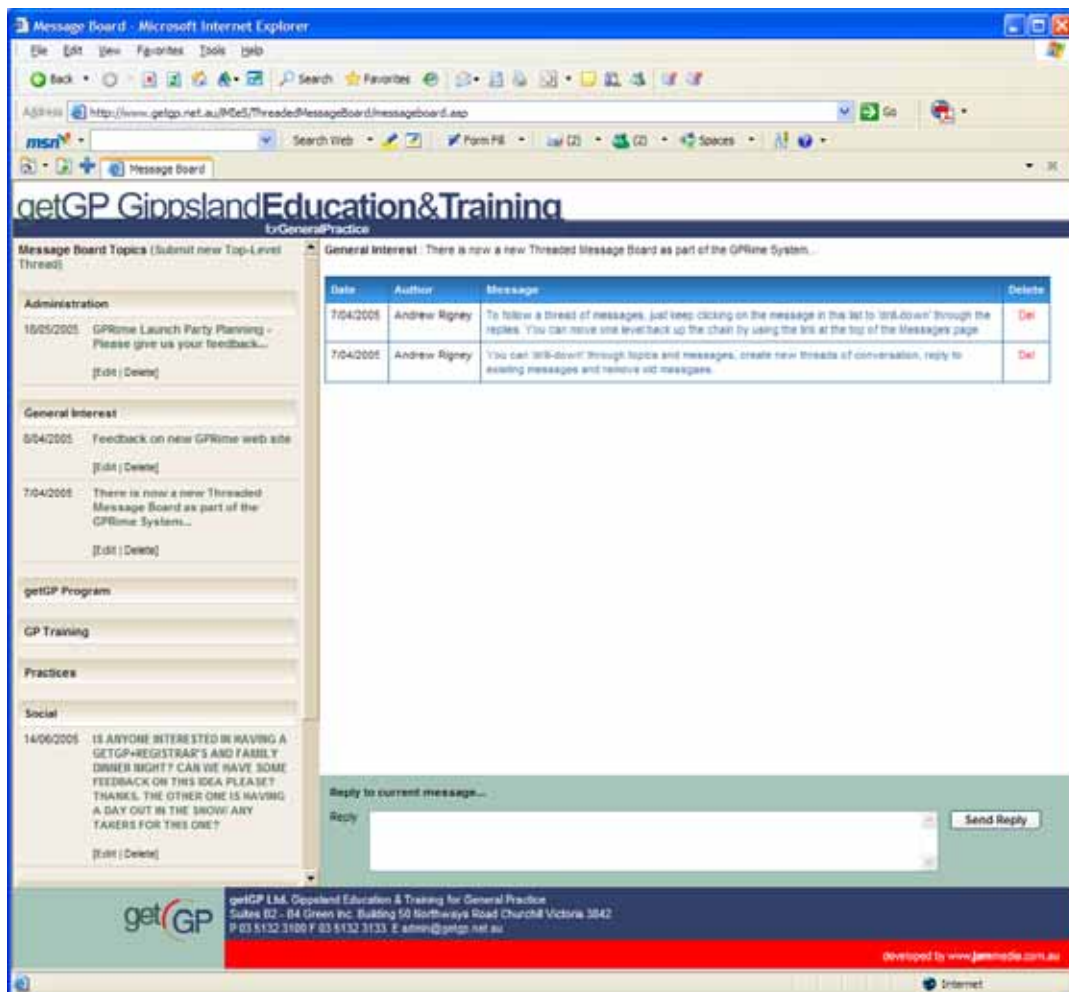
Contents

1. Threaded Message Board	p. 3
▪ 1.1 Overview	
▪ 1.2 Creating Top-Level Threads	
▪ 1.3 Following Threads	
▪ 1.4 Replying to Posted Messages	
▪ 1.5 Deleting Messages	

1. Threaded Message Board

1.1 Overview

The Threaded Message Board is an open forum where GPRime users can post messages to the entire RTP. Each message can be traced along a thread on conversation, so ideas can be pursued and expanded upon.



New threads can be created; messages entered and replied to by any user.

1.2 Creating Top-Level Threads

A new Top-Level Thread can be created by entering the thread name into the box below the names of all the threads on the left.



Once the thread is named, click on the button to create it. It can then have conversations flowing out of it.

1.3 Following Threads

Threads of conversation can be followed by clicking on the message. Each click will 'drill-down' one level. The message will appear at the top of the page along with a link to go back 1 message. This is how the messages are traced downwards. At any time, you can reply to the current message (the one displayed at the top of the page) by filling in the Reply form at the bottom of the screen.

1.4 Replying to Posted Messages

To reply to the active message, simply type your reply into the box and click on the Reply button to post up your reply to the Message Board. Other users may then reply to your message, in which case you would drill down below your message to see the replies made.

1.5 Deleting Messages

You may delete messages by clicking on the Del link. Deleting a message will also delete all replies to that message iteratively downwards.